

JOIN US!

\$1850 per person includes:

- 5 Nights "Deluxe Double Occupancy" (Santa Fe) Each villa has two private bedrooms and baths, plus shared living room & kitchen
- 1 Night double occupancy (Albuquerque)
- Breakfast Thursday thru Tuesday
- Refreshments, Lunches and Dinners as indicated
- Group ground transportation & full-time tour guide
- Hands-on Workshops, instruction and supplies
- Additional activities as indicated
- SewJourn Swag Bag

OUR POLICY:

- ◆ Initial minimum deposit of \$300 due by May 1, 2019
- ◆ Payments must total at least \$900 due by July 20, 2019
- ◆ **Full payment is due August 15, 2019**
- ◆ Admin Fee of 25% added to any balance due after Aug 15
- ◆ Returned check charge \$35
- ◆ An email address is REQUIRED for trip communications.

NOTE: All pricing reflects a discount for payments by check or money order. Payments by credit/debit card, please add 4%

REFUNDS: If you must cancel your reservation:

thru May 1, 2019 - Payments less \$150
May 2 thru July 20- Payments less \$300
July 21 thru August 15- Payments less \$600
After August 15- No Refund

If CE must cancel: Full refund of all funds paid to CE only



@CULTURED EXPRESSIONS

This SewJourn is the perfect adventure to get acquainted with Santa Fe's unique cultural mix and artistic vibe. Enjoy hands-on workshops with acclaimed local artists, learning and creating your own special souvenirs in the process.

Along with two days of indigo batik, we'll create our own pottery, gourd art & more. Did we mention the deluxe accommodations, expert tour guide, food, drink and merriment? Our SewJourn ends with a full day and overnight in Albuquerque (Mon-Tues) for a sampling of the city, and easy departures from ABQ airport on Tuesday.

Treat yourself!

Hosted by LISA SHEPARD STEWART



Lisa is an author, designer and instructor based in New Jersey, specializing in the creative use of authentic African fabrics & trims for sewing, quilting, home décor and crafts.

Her three how-to project books, *AFRICAN ACCENTS*, *GLOBAL EXPRESSIONS* and *ON THE GO!* show readers how to incorporate the fabrics into beautiful & functional make-it-yourself projects. Through her company, Cultured Expressions, she offers workshops, trunk shows, events & specialty merchandise, all designed to foster an appreciation for the cultures and to bring out the creativity in others.

For more information & updates, visit www.CulturedExpressions.com

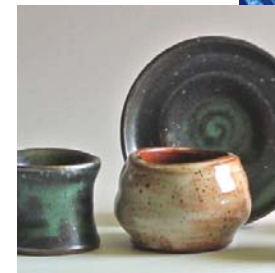
MAILING: PO Box 356 • Rahway, NJ 07065
Phone: 1-866-MUDCLOTH
(866-683-2568)
Email: info@CulturedExpressions.com

Visit our Studio in Rahway, NJ!

cultured EXPRESSIONS

SEWJOURN SANTA FE and ALBUQUERQUE NEW MEXICO

September 18-24, 2019



Fiber Art & More

HANDS-ON WORKSHOPS

ARTIST STUDIOS • SHOPPORTUNITIES

Great Food, Drink, Sites & Leisure

"FEEL THE FABRIC ...EMBRACE THE CULTURE"

ITINERARY - September 18-24, 2019

WEDNESDAY — 18 September

Arrivals from various US cities to Santa Fe, NM (Flights thru Albuquerque, NM (ABQ))
 3:00pm to 6:00pm Hotel Check-In / Orientation / Meet & Greet
 7:00pm Welcome Dinner (included)

THURSDAY — 19 September

Breakfast
 9:00am to 3:00pm - **Indigo Batik Workshop Part I**
 Lunch served on-site (included)
 City Tour
 Dinner— no host*

FRIDAY — 20 September

Breakfast
 9:00am to 1:00pm - **Indigo Batik Workshop Part II**
 Options: Flea Market / Nature Trip / Spa Time / Museums
 (Lunch on your own)
 Dinner — no host

SATURDAY — 21 September

Breakfast
 10:00am - **Embellished Gourds Workshop**
 Northern Excursion—Weavers, Fiber Art Studio, etc.
 Return to Santa Fe / Dinner on your own

SUNDAY — 22 September

Champagne Breakfast / Artist visit
 11:30am - **Pottery Workshop**
 Options: Museums, Canyon Road, Tea House
 Dinner on your own

MONDAY — 23 September

Breakfast
 10:00am - Condo Check-Out
 Depart for Albuquerque
 Gallery & Shop Visits
 Check into Hotel
 Farewell Dinner (included)

TUESDAY — 24 September

Hotel Breakfast
 12:00 Noon Hotel Check-Out / Departures

No-host = We dine together, each paying for our individual meals
Meals on your own = No set dinner plans, group splits up as desired



Itinerary subject to slight revision



SSF-19

Count me in for the **SewJourn to Santa Fe 2019**
 (Please use a separate form for each participant)

I have read and understand the attached Policy, and enclose deposit of \$ _____
 (\$300 Minimum)

Initials _____ Date _____

Send to: **Cultured Expressions, Inc.**
 PO Box 356 - Dept. SSF19
 Rahway, NJ 07065

*NOTE: 4% will be added to Credit / Debit / Paypal payments, etc.

Method of Payment *

Check / Money Order — U.S. funds only
 Payable to Cultured Expressions, Inc.

- MC
 VISA
 AMEX
 DISC

PLEASE PRINT

Name _____

Address _____

City _____

State _____

Zip _____

Email (required) _____

Phone _____

Expiration Date ____/____/____ CVW Code
 3-digits for MC, Visa, Disc
 4-digits for Amex

Signature _____